

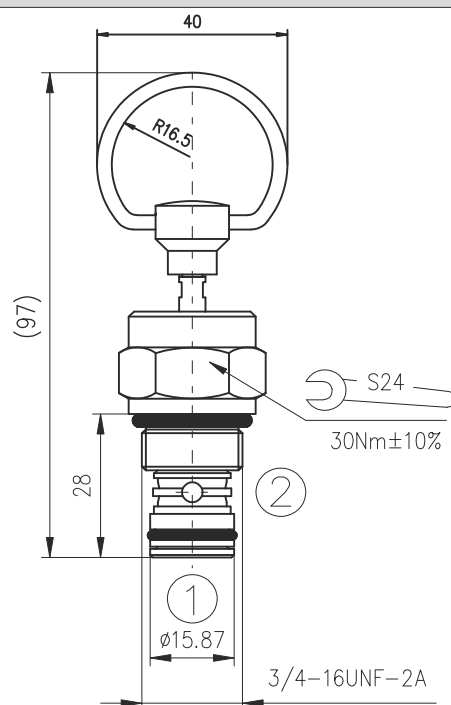
DESCRIPTION

A manual , 2-way , pull-to-open , screw-in , hydraulic directional control valve.

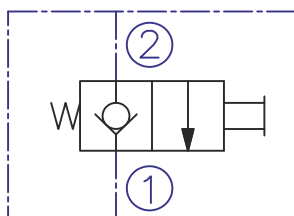
OPERATION

The MV08-2B blocks flow from 2 to 1 until an operator pulls the shaft outward.
Note: Pressure at port 1 will directly act on the spool and spring. Port 1 is intended to be a tank port only.
The bias spring allows for up to 12,4bar back-pressure at 1 before the valve will open.

DIMENSIONS



SYMBOL



ORDERING CODE

MV08-2B ***

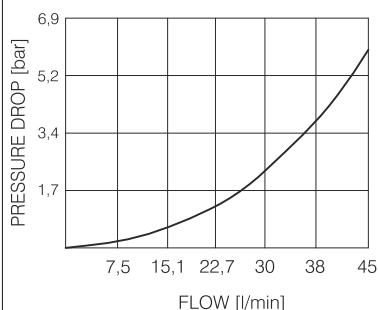
Manual spring return valve

Seals: Buna N - N
Viton V - V

PERFORMANCE

Cartridge only

2 to 1
32cSt oil at 40°C



TECHNICAL DATA

Operating pressure:	port 2 port 1	250bar 14bar
Flow: See Performance Cart		
Internal leakage:	2 to 1	0,25cc/minute max. at 250bar
Mechanical Pull Effort Required at rated pressure		4,5kg initial 7kg full shift
Working liquid-hydraulic oils with characteristics:		10...400 cSt 0,025 mm -20...+80°C
Cavity: See "Cavities and bodies" brochure		CC08-2