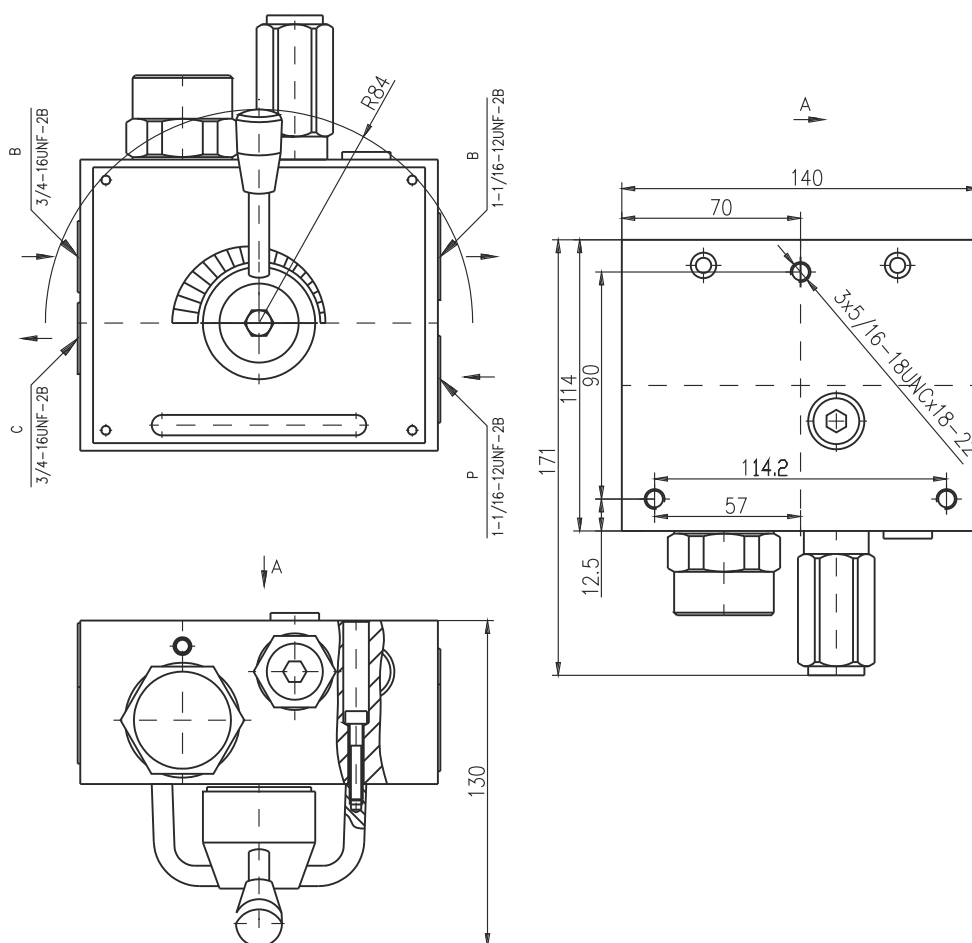


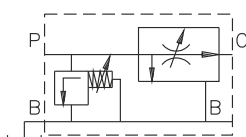
# DESCRIPTION

- ✓ Three way flow control valves for pipe mounting -FCV-G
- ✓ The flow control valves are designed to regulate the flow rate in the hydraulic system, independently of the inlet flow and pressure variations in it. Priority flow regulator gives priority of the adjusted flow to pass entirely to bypass, tank or a separate system.

# DIMENSIONS



# SYMBOL



# TECHNICAL DATA

Max. admitted inlet flow	113 l/min
Max. delivery in regulated flow	40 l/min
Max. admitted inlet pressure	210 bar
Nominal pressure	150 bar
Nominal port size	Ø16 mm
Working liquid-hydraulic oils with characteristics:	
-viscosity	10...400 cSt
-degree of filtration	0,025 mm
-temperature	-20... +80°C



BULGARIA, 6100 Kazanlak,  
31, Makariopolski str.,  
Tel.: (+359 431) 622-22, 655-89  
Fax: (+359 431) 622-23,  
e-mail: shipka54@mbox.contact.bg