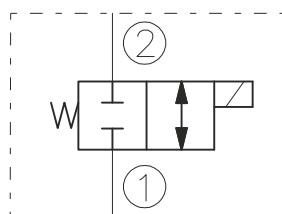


## SYMBOL



## CAVITY

See "CAVITIES AND BODIES" brochure

## TO ORDER

EV10-2LH

## Voltage

0 - Without coil  
12 - 12V DC  
24 - 24V DC  
11 - 110V RAC  
22 - 220V RAC

## Seals

N - Buna N  
V - Viton A

Terminations DIN 43650.  
See "Accessories" brochure

## DESCRIPTION

A solenoid-operated, 2-way, direct-acting, spool-type, normally closed, screw-in, hydraulic cartridge valve designed to function as bidirectional blocking valve in high flow circuits.

## OPERATION

When de-energized, the EV10-2LH stops flow in both directions.  
When energized, the valve's spool shifts to open the bidirectional flow path.

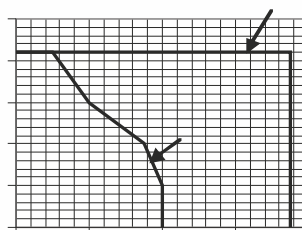
## RATINGS

Operating Pressure: 210bar  
Flow: See Performance Chart.  
Internal Leakage: 82 cc/minute max. at 210bar  
Temperature: -20°C to 90°C with standard Buna N seals  
Coil Duty Rating: Continuous from 85% to 115% of nominal voltage  
Minimum Pull-in Voltage: 85% of nominal at 210bar  
Filtration: Recommended 25  $\mu$ m nominal or better  
Fluids: Mineral-based or synthetics with lubricating properties at viscosities of 7,4 to 420 cSt  
Installation: No restrictions  
Cavity: CC10-2 ; See "CAVITIES AND BODIES" brochure

## PERFORMANCE (Cartridge Only)

curve 2 - 1 to 2  
curve 1 - 2 to 1  
32cSt oil at 40°C

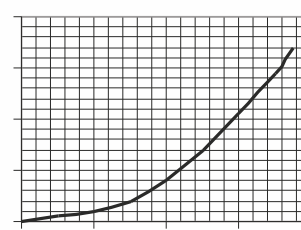
PRESSURE DROP [bar]



FLOW [l/min]

Energized  
32cSt oil at 40°C

PRESSURE [bar]



FLOW [l/min]



BULGARIA, 6100 Kazanlak,  
31, Makariopolski str.,  
Tel.: (+359 431) 622-22, 655-89  
Fax: (+359 431) 622-23,  
e-mail: shipka54@mbx.contact.bg