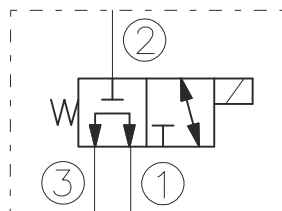


## SYMBOL



## CAVITY

See "CAVITIES AND BODIES" brochure

## TO ORDER

## EV08-3D

## Voltage

0 - Without coil  
12 - 12V DC  
24 - 24V DC  
11 - 110V RAC  
22 - 220V RAC

## Seals

N - Buna N  
V - Viton A

Terminations DIN 43650.

See "Accessories" brochure

## DESCRIPTION

A solenoid-operated, 3-way, direct-acting, spool-type, screw-in, hydraulic cartridge valve.

## OPERATION

When de-energized, the EV08-3D allows flow from 3 to 1, while blocking flow at 2.

When energized, the valve's spool shifts to open from 2 to 3, while blocking at 1.

## RATINGS

Operating Pressure: 210bar

Flow: 8 l/min max.

Internal Leakage: 82 cc/minute max. at 210bar

Temperature: -20°C to 90°C with standard Buna N seals

Coil Duty Rating: Continuous from 85% to 115% of nominal voltage

Minimum Pull-in Voltage: 85% of nominal at 210bar

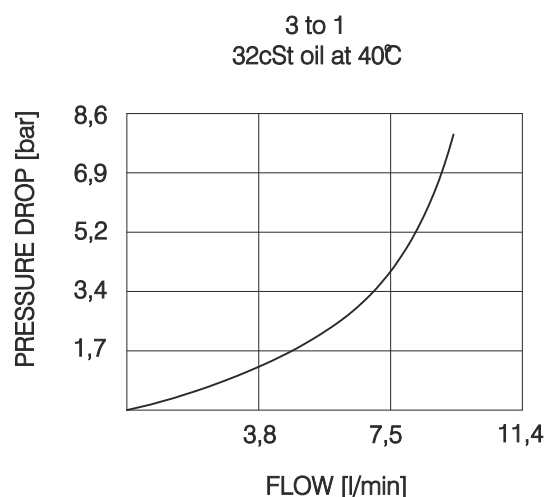
Filtration: Recommended  $25\mu\text{m}$  nominal or better

Fluids: Mineral-based or synthetics with lubricating properties at viscosities of 7,4 to 420 cSt

Installation: No restrictions

Cavity: CC08-3 ; See "CAVITIES AND BODIES" brochure

## PERFORMANCE (Cartridge Only)



BULGARIA, 6100 Kazanlak,  
31, Makariopolski str.,  
Tel.: (+359 431) 622-22, 655-89  
Fax: (+359 431) 622-23,  
e-mail: shipka54@mbox.contact.bg