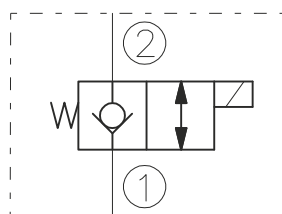


## SYMBOL



## CAVITY

See "CAVITIES AND BODIES" brochure

## TO ORDER

EV06-2E

### Voltage

0 - Without coil  
12 - 12V DC  
24 - 24V DC  
11 - 110V RAC  
22 - 220V RAC

### Seals

N - Buna N  
V - Viton A

Terminations DIN 43650.

See "Accessories" brochure

## DESCRIPTION

A solenoid-operated, 2-way, piloted, poppet-type, normally closed, screw-in hydraulic cartridge valve designed for low leakage blocking and load-holding applications.

## OPERATION

When de-energized, the EV06-2E acts as a check valve, allowing flow from 1 to 2, while blocking flow from 2 to 1.

When energized, the cartridge poppet lift to open the 2 to 1 flow path. In this mode, bidirectional flow is allowed.

## RATINGS

Operating Pressure: 250bar

Flow: See Performance Chart

Internal Leakage: 0,25 cc/minute max. at 250bar

Temperature: -20°C to 90°C with standard Buna N seals

Coil Duty Rating: Continuous from 85% to 115% of nominal voltage

Minimum Pull-in Voltage: 85% of nominal at 250bar

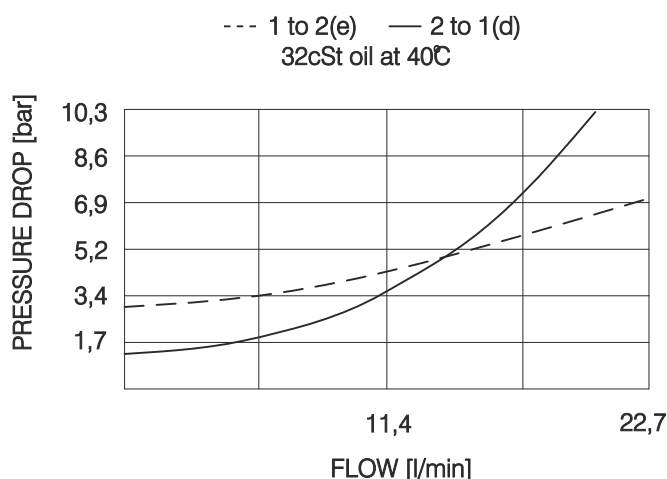
Filtration: Recommended 25µm nominal or better

Fluids: Mineral-based or synthetics with lubricating properties at viscosities of 7,4 to 420 cSt

Installation: No restrictions

Cavity: CC06-2 ; See "CAVITIES AND BODIES" brochure

## PERFORMANCE (Cartridge Only)



BULGARIA, 6100 Kazanlak,  
31, Makariopolski str.,  
Tel.: (+359 431) 622-22, 655-89  
Fax: (+359 431) 622-23,  
e-mail: shipka54@mbx.contact.bg