

DESCRIPTION

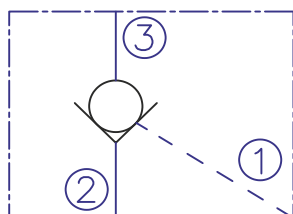
A screw-in , cartridge-style , hydraulic check valve for use as a blocking or load-holding device.

OPERATION

The CPV08-3A allows flow passage from 2 to 3 , while normally blocking flow from 3 to 2. Flow will be allowed from 3 to 2 when sufficient pressure is applied at 1. The cartridge has a 3:1 pilot ratio , meaning that at least one-third of the load pressure held at 3 is required at 1 to open the valve.

The check is spring-biased to assure holding in static or no-load conditions. A sealed pilot piston option is available.

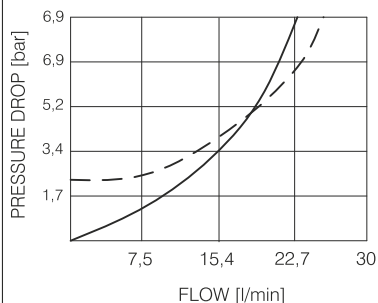
SYMBOL



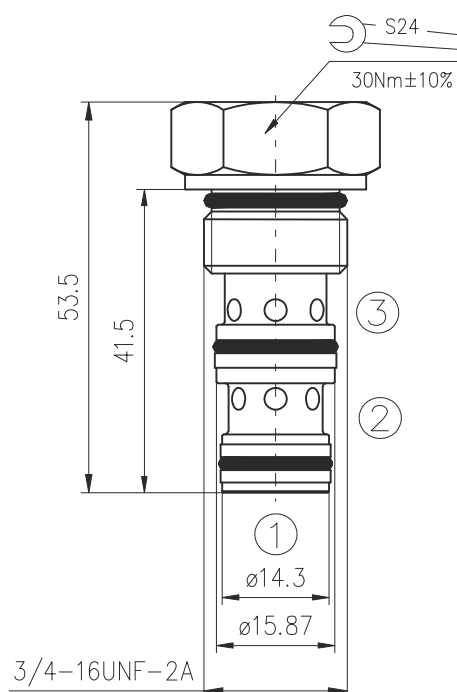
PERFORMANCE

Cartridge only

— 3 to 2 - - 2 to 3
32cSt oil at 40°C



DIMENSIONS



ORDERING CODE

CPV08-3A ***

Pilot to open check valve

Seals:

Buna N - N
Viton V - V

TECHNICAL DATA

Operating pressure	250bar
Rated flow - See Performance Chart	
Internal leakage:	1 to 2 2 to 1 (without sealed piston)
	0,25cc/minute max. at 250bar 115cc/minute max. at 250bar
Check spring bias	2bar
Pilot ratio	3:1
Working liquid-hydraulic oils with characteristics: -viscosity -degree of filtration -temperature	10...400 cSt 0,025 mm -20...+80°C
Cavity: See "Cavities and bodies" brochure	CC08-3