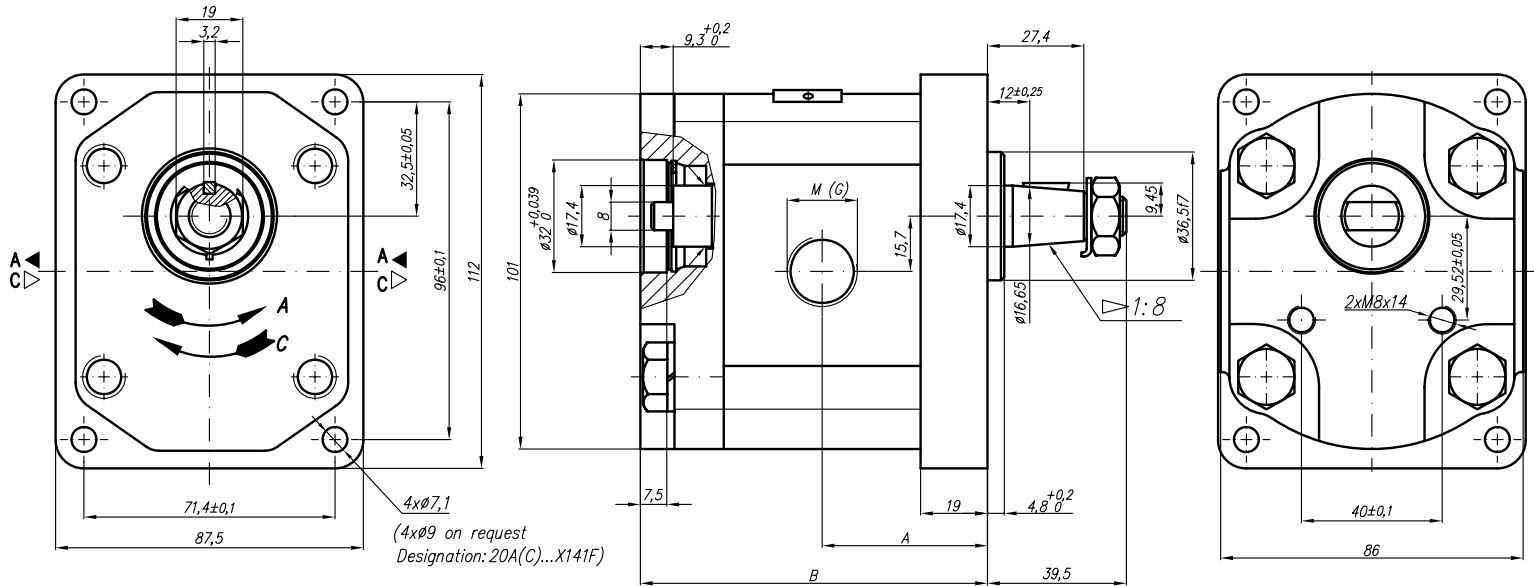


Pump type:
20A(C)...X141...



BULGARIA, 6100 Kazanlak,
31, Makariopolski str.,
Tel.: (+359 431) 622-22, 655-89
Fax: (+359 431) 622-23,
e-mail: shipka54@mbox.contact.bg
www.shipka54.com



Type	Displacement cm ³ /rev	Flow		Pressure P _{nom} bar	max Speed n rpm	Dimension												
		at 1500 rpm l/min	at max rpm l/min			Inlet			Outlet									
						A mm	B mm	M	G	U	M	G	U					
20A(C)4,5X141...	4,5	6,14	14,33	250	3500	42,5	89,7	M20x1,5	G1/2									
20A(C)6,3X141...	6,3	8,69	20,29	250	3500	44	92,7											
20A(C)8,2X141...	8,2	11,32	26,40	250	3500	45,5	95,6											
20A(C)10X141...	10	13,95	32,55	250	3500	47	98,7		G3/4									
20A(C)11X141...	11,3	15,76	36,78	250	3500	48	100,7											
20A(C)12X141...	12	16,92	39,48	250	3500	48,6	102		M16x1,5									
20A(C)14X141...	14	19,95	46,55	250	3500	50	105,1											
20A(C)15X141...	15	21,60	36,00	250	2500	51	106,6		G1/2									
20A(C)16X141...	16	23,04	38,40	250	2500	52	108,3											
20A(C)19X141...	19	27,36	45,60	200	2500	54	113,2		M20X1,5									
20A(C)22X141...	22	31,68	42,24	180	2000	57	118,2											
20A(C)25X141...	25	36,00	48,00	160	2000	59,2	123,1											