

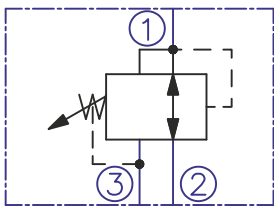
DESCRIPTION

A screw-in , cartridge-style , direct-acting , spool-type , hydraulic pressure reducing/relieving valve with internal pilot and internal spring chamber drain , design to act as a pressure-regulating device.

OPERATION

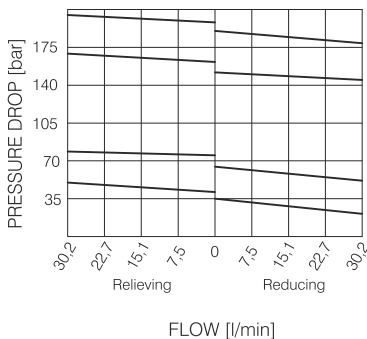
In its steady state , the PRV10-3A allows flow to pass bidirectionally from 2 to 1 , with the spring chamber constantly drained at 3.
On attainment of a pre-determined pressure at 1 , the cartridge shifts to restrict input flow at 2 , thereby regulating pressure at 1. In this mode , the valve will also relieve 1 to 3 at approximately 10 bar over the reducing setting.

SYMBOL

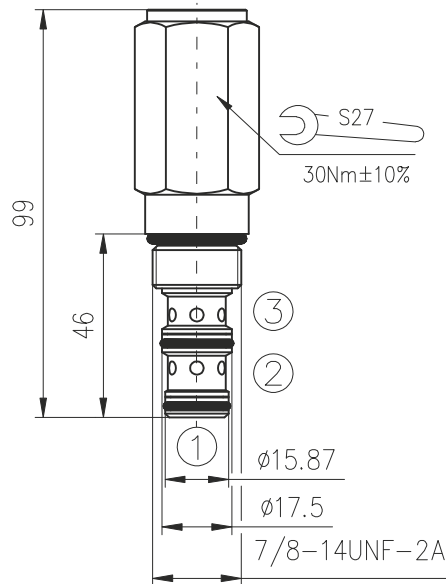


PERFORMANCE

Cartridge only
32cSt oil at 40°C



DIMENSIONS



ORDERING CODE

PRV10-3A *** **

Pressure reducing valve

Pressure reducing range:

- 10...30bar - 1
- 15...60bar - 2
- 25...100bar - 3
- 40...140bar - 4

Seals:

- Buna N - N
- Viton V - V

TECHNICAL DATA

Operating pressure		210bar
Pressure reducing range:	PRV10-3A1...	10...30 bar
	PRV10-3A2...	15...60 bar
	PRV10-3A3...	25...100 bar
	PRV10-3A4...	40...140 bar
Rated flow - See Performance Chart		
Internal leakage:		0,25cc/minute at 200bar max. to 75% of nominal setting
Working liquid-hydraulic oils with characteristics: -viscosity -degree of filtration -temperature		10...400 cSt 0,025 mm -20...+80°C
Cavity: See "Cavities and bodies" brochure		CC10-3