

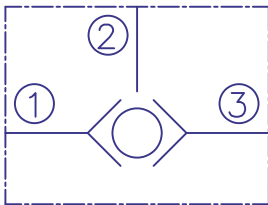
DESCRIPTION

A load-shuttling , screw-in , cartridge-style , hydraulic check valve , for use in blocking circuits where a priority of flow/direction is given to a higher pressure circuit over a lower one.

OPERATION

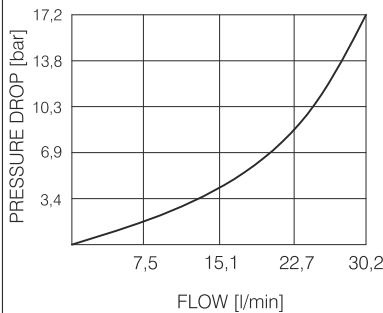
The LSV10-3A will allow flow from the higher pressure 1 to 2 port to the 2 port. The valve is commonly used to direct oil from the pressure side of a bidirectional hydraulic motor to a pressure-released hydraulic brake.

SYMBOL

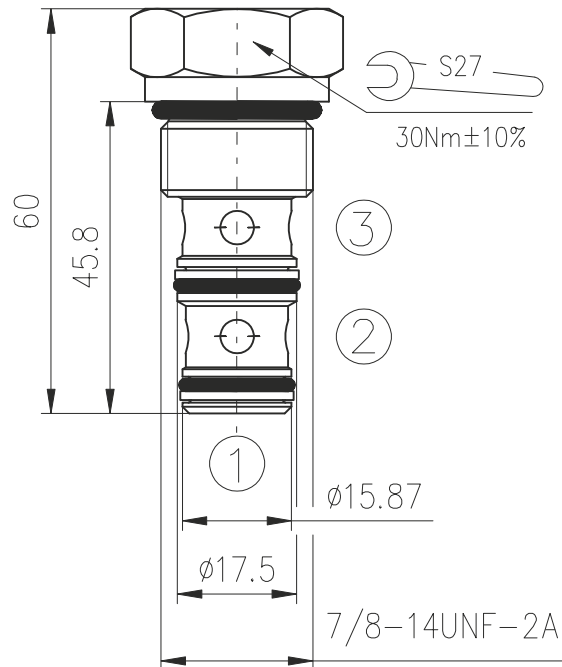


PERFORMANCE

Cartridge only
1 or 3 to 2
32cSt oil at 40°C



DIMENSIONS



ORDERING CODE

LSV10-3A ***

Pressure sequence valve

Seals: Buna N - N
Viton V - V

TECHNICAL DATA

Operating pressure	210bar
Rated flow - See Performance Chart	
Internal leakage:	0,25cc/minute max. at 210bar
Working liquid-hydraulic oils with characteristics: -viscosity -degree of filtration -temperature	10...400 cSt 0,025 mm -20...+80°C
Cavity: See "Cavities and bodies" broshure	CC10-3



BULGARIA, 6100 Kazanlak,
31, Makariopolski str.,
Tel.: (+359 431) 622-22, 655-89
Fax: (+359 431) 622-23,
e-mail: shipka54@mbox.contact.bg