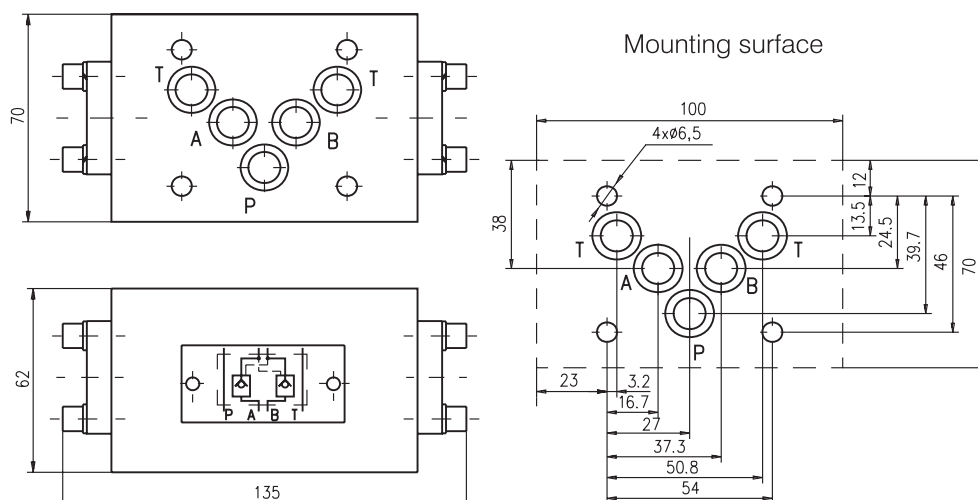


DESCRIPTION

- ✓ Check valves with hydraulic operation for modular mounting-KOHU10M/32-...
- ✓ Hydraulically operated check valve is designed to allow working liquid passing in one direction freely (A to A , B to B) and at availability of control signal in the opposite direction (A to A , B to B). The valve ensures hydraulic locking of the hydraulic cylinders , i.e. Provides their stability under load at neutral position of the directional control valve.
- ✓ Mounting surface CETOP5 (NG10)

DIMENSIONS



ORDERING CODE

KOHU 10 M / 32 - 2 ***

Check valve with hydraulic operation

Nominal bore 10mm.

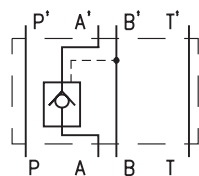
Modular mounting

Rated pressure: up to 320 bar.-32

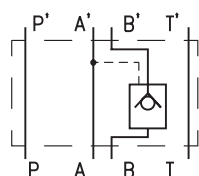
Modification

Valve position: at line A - A
at line B - B
at line A and B - C

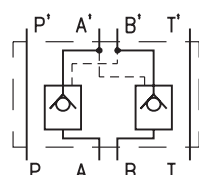
SYMBOL



KOHU10M/32-2A



KOHU10M/32-2B



KOHU10M/32-2C

TECHNICAL DATA

Max. Pressure	320 bar
Rated flow ($\Delta p=2,5$ bar.)	40 l/min
Cracking pressure (for check valve)	0,5 bar
Pilot ratio	1/16
Working liquid-hydraulic oils with characteristics:	
-viscosity	10...400 cSt
-degree of filtration	0,025 mm
-temperature	-20...+80°C