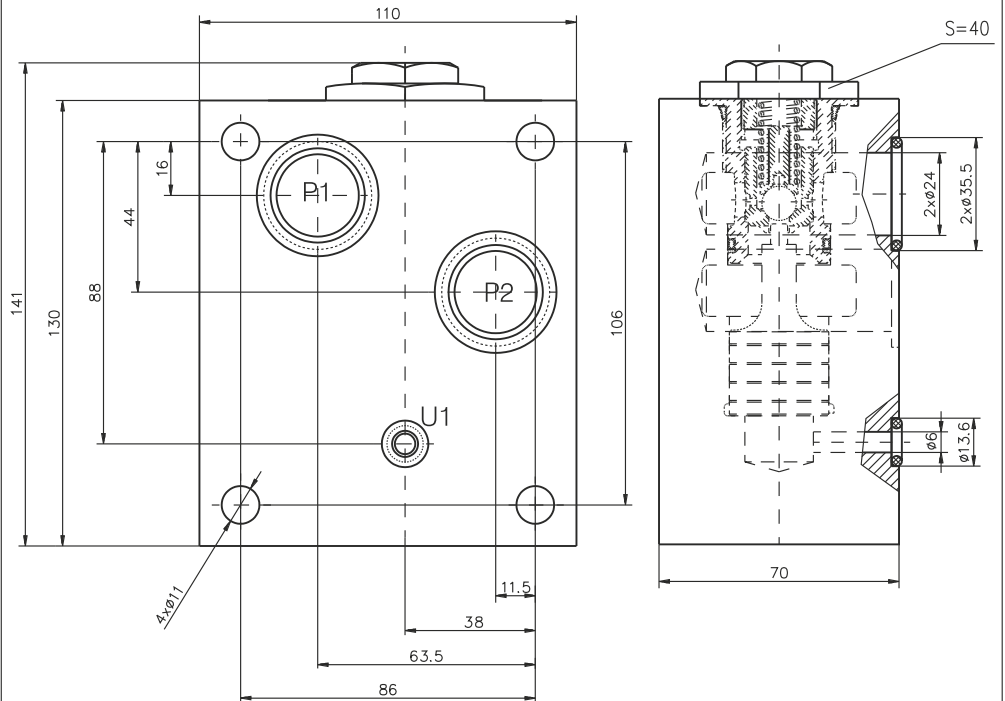


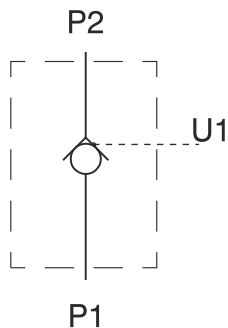
DESCRIPTION

✓ Check valves with hydraulic operation for plate mounting- KOHU16P
 ✓ Hydraulically operated check valve is designed to allow working liquid passing in one direction freely (P_2 to P_1), and at availability of control signal in the opposite direction (P_1 to P_2). The valve ensures hydraulic "locking" of the hydraulic cylinders, i.e. providing their stability under load at neutral position of the directional control valve.

DIMENSIONS



SYMBOL

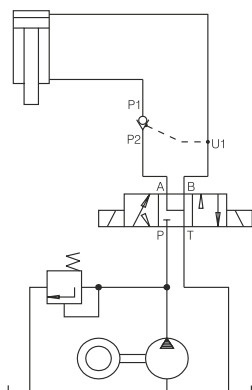


ORDERING CODE

KOHU 16 P

Check valve with hydraulic operation
 Nominal bore-16 mm
 Pipe mounting

APPLICATIONS



TECHNICAL DATA

Max. Pressure	320 bar
Rated flow	160 l/min
Cracking pressure (for check valve)	0,8 bar
Area ratio (check valve seat/pilot piston)	1/1,5
Working liquid-hydraulic oils with characteristics:	
-viscosity	10...400 cSt
-degree of filtration	0,025 mm
-temperature	-20...+80°C



BULGARIA, 6100 Kazanlak,
 31, Makariopolski str.,
 Tel.: (+359 431) 622-22, 655-89
 Fax: (+359 431) 622-23,
 e-mail: shipka54@mbox.contact.bg