

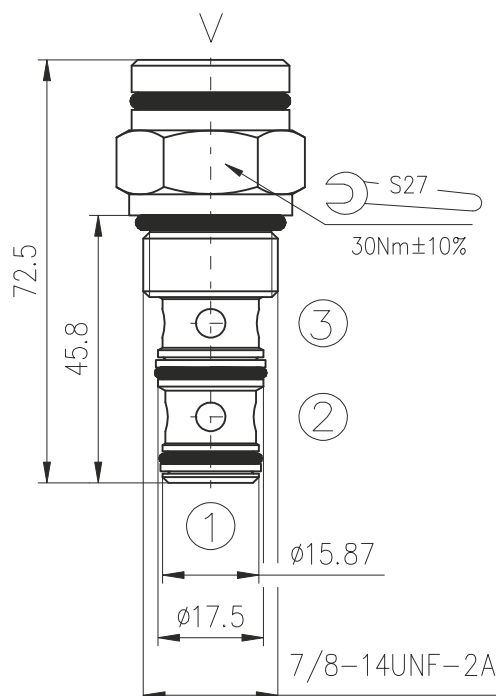
DESCRIPTION

A screw-in , cartridge-style , pilot-operated , spool-type , normally open , hydraulic directional valve for two-way circuit requiring remote pilot actuation.

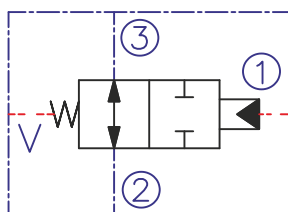
OPERATION

In neutral (unpiloted) , the HV10-3A allows flow from 3 to 2 bidirectionally. "V" is a spring chamber vent-to-atmosphere , which is internally O-ring sealed from the cartridge flow paths. On remote pilot signal at 1 , the valve shifts to block 3 to 2 bidirectionally.

DIMENSIONS



SYMBOL



ORDERING CODE

HV10-3A ***

Piloted 2-way spool ,
external vent

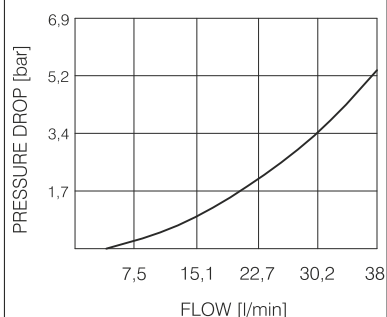
Seals:

Buna N - N
Viton V - V

PERFORMANCE

Cartridge only

3 to 2
32cSt oil at 40°C



TECHNICAL DATA

Operating pressure:	240bar
Flow: See Performance Cart	
Internal leakage:	82cc/minute max. at 240bar
Pilot Pressure Required: to full spool shift	for 4,1bar spring for 7,6bar spring 4,7bar 8,6bar
Working liquid-hydraulic oils with characteristics: -viscosity -degree of filtration -temperature	10...400 cSt 0,025 mm -20...+80°C
Cavity: See "Cavities and bodies" brochure	CC10-3