

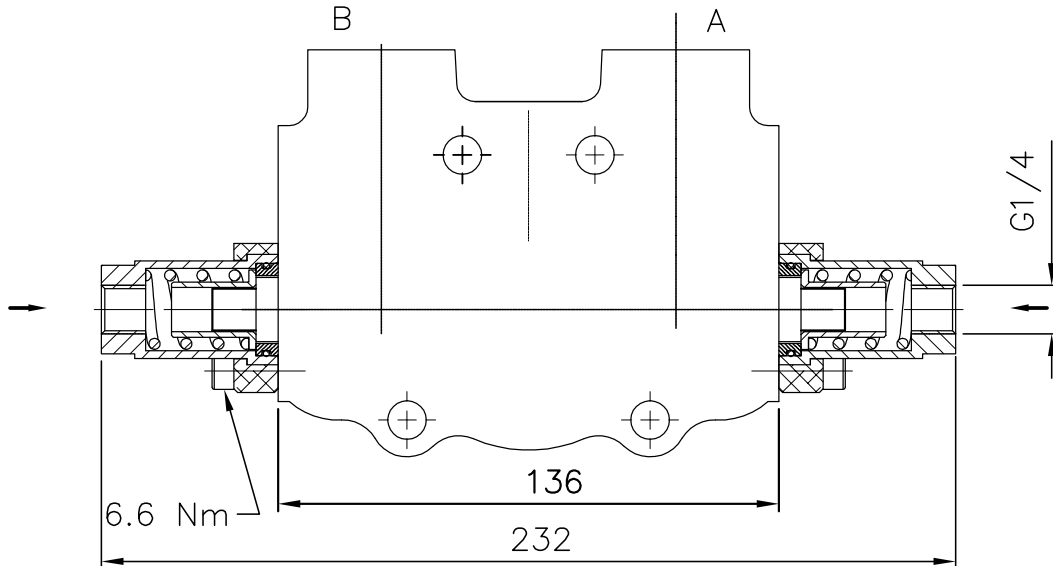
Распределитель гидравлический PC 100
 Directional control valve PC 100

H – proportional hydraulic control code – H2

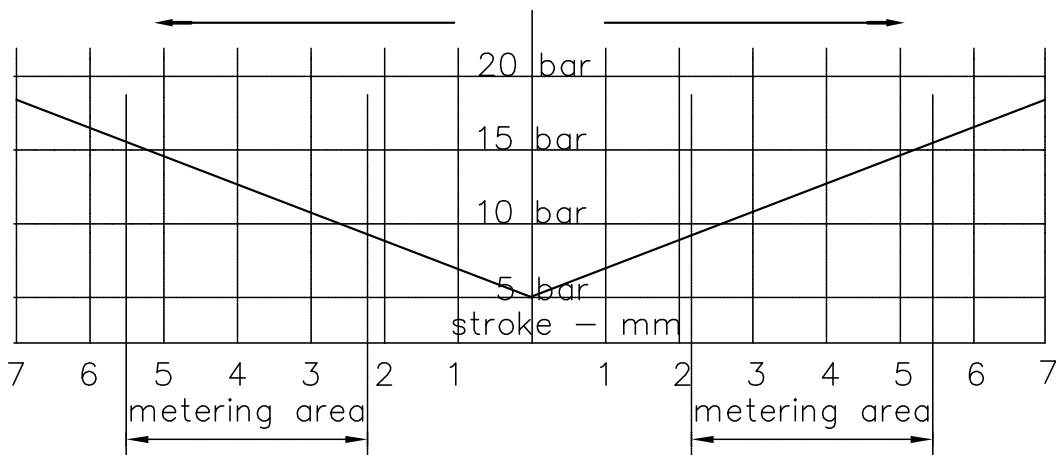
DESCRIPTION

For starting, controlling and stopping the working oil between the Generator of the pressured flow, the Consumers and the Tank

* It can be used with special spools and standard body



Pilot pressure – stroke diagram Pilot pressure range PC100
(oil pilot operated)
 max. pilot pressure 30 bar 5 bar to begin spool shift
(72 psi to begin spool shift)
 18 bar to complete spool shift
(260 psi to complete spool shift)



Metering curve

Flow characteristics /
 spool travel

