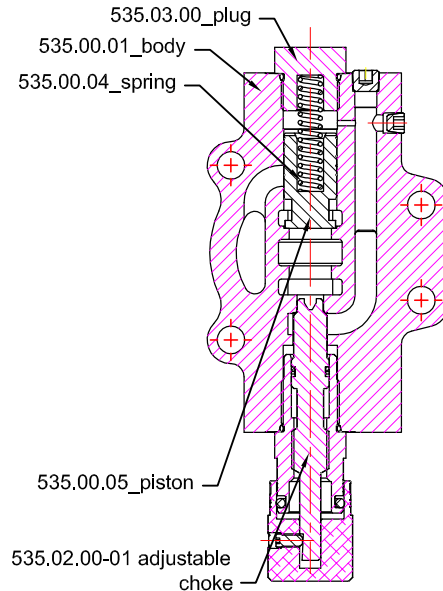
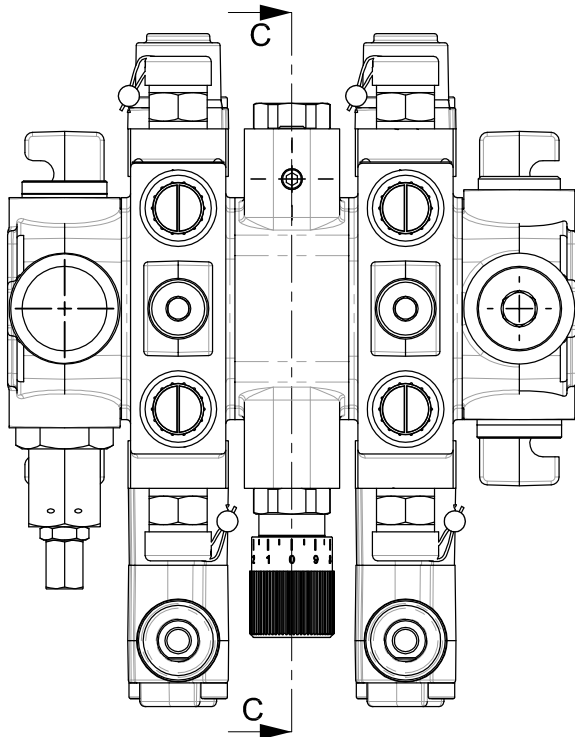


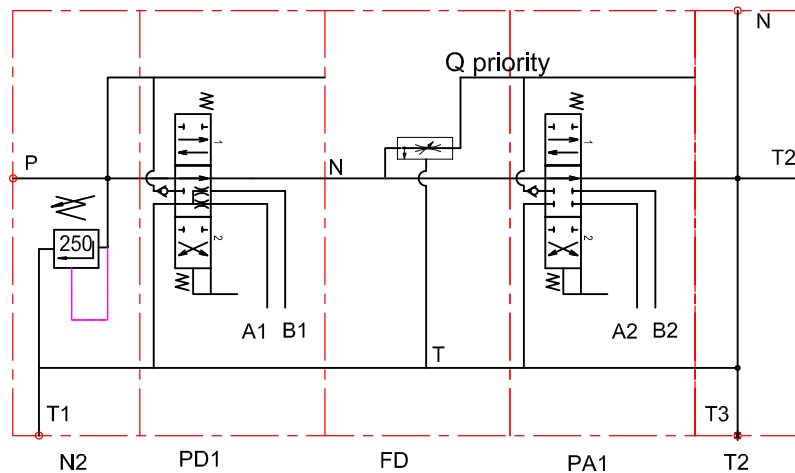
directional control valve PC70

DF - pressure compensated flow divider section



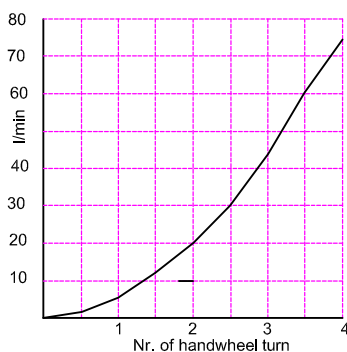
2PC70/N2/PD1/DF/PA1/T2/G/KZ1

Hydraulic circuit

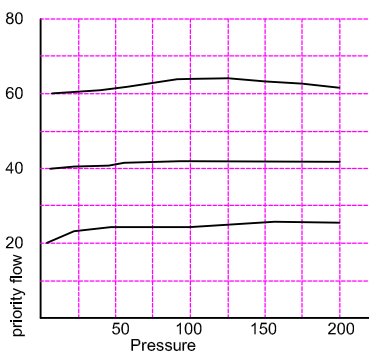


The flow on the downstream sections can be adjusted from 0 to 70 l/min by means of graduated handwheel. Residual flow goes to tank.

Flow regulation diagram  
 $Q_n = 80 \text{ l/min}$  ;  $P = 100 \text{ bar}$



Pressure-flow diagram  
 $Q_n = 80 \text{ l/min}$



Pressure drop  
 $P_{in} - P_{out}$

