

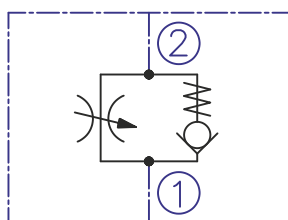
DESCRIPTION

A screw-in , cartridge-style , variable orifice , hydraulic flow control valve with reverse flow check.

OPERATION

The FC08-2A increases its orifice value from fully closed to fully open with counterclockwise adjustment rotation.

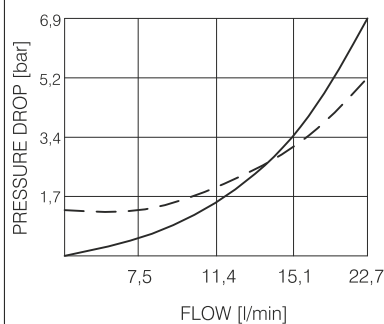
SYMBOL



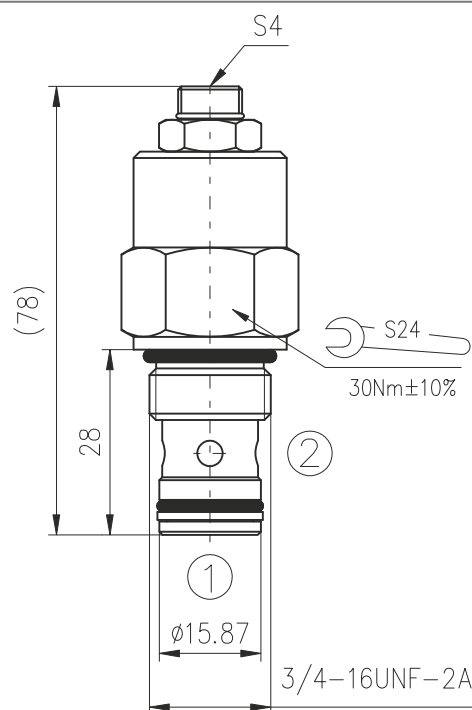
PERFORMANCE

Cartridge only

— full open — rev. flow
32cSt oil at 40°C



DIMENSIONS



ORDERING CODE

FC08-2A ***

Flow control valve

Seals: Buna N - N
Viton V - V

TECHNICAL DATA

Operating pressure	240bar
Flow:	45 l/min (at 10bar pressure differential) at full open
Internal leakage:	0,5cc/minute max. at shut-off
Working liquid-hydraulic oils with characteristics: -viscosity -degree of filtration -temperature	10...400 cSt 0,025 mm -20...+80°C
Cavity: See "Cavities and bodies" brochure	CC08-2



BULGARIA, 6100 Kazanlak,
31, Makariopolski str.,
Tel.: (+359 431) 622-22, 655-89
Fax: (+359 431) 622-23,
e-mail: shipka54@mbox.contact.bg