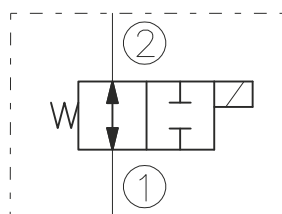


SYMBOL



CAVITY

See "CAVITIES AND BODIES" brochure

TO ORDER

EV56-2K

Voltage

0 - Without coil
12 - 12V DC
24 - 24V DC
11 - 110V RAC
22 - 220V RAC

Seals

N - Buna N
V - Viton A

Terminations DIN 43650.

See "Accessories" brochure

DESCRIPTION

A solenoid-operated, 2-way, direct-acting, spool-type, normally open, screw-in, hydraulic cartridge valve designed to function as bidirectional blocking valve in low flow circuits.

OPERATION

When de-energized, the EV56-2K allows flow in both directions. When energized, the valve's spool shifts to close bidirectionally.

RATINGS

Operating Pressure: 200bar

Flow: 8 l/min max.

Internal Leakage: 82 cc/minute max. at 200bar

Temperature: -20°C to 90°C with standard Buna N seals

Coil Duty Rating: Continuous from 85% to 115% of nominal voltage

Minimum Pull-in Voltage: 85% of nominal at 200bar

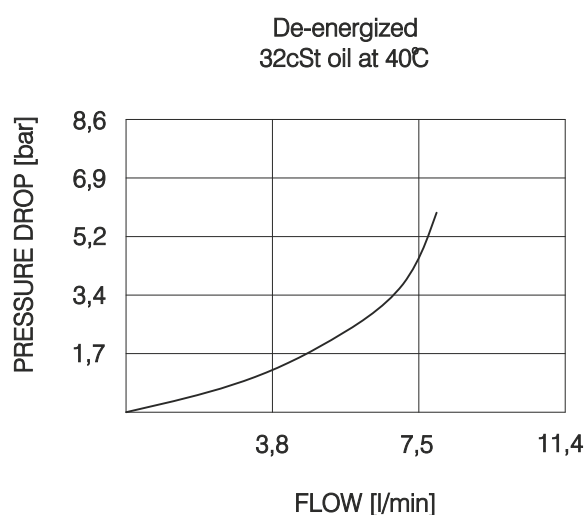
Filtration: Recommended 25 μ m nominal or better

Fluids: Mineral-based or synthetics with lubricating properties at viscosities of 7,4 to 420 cSt

Installation: No restrictions

Cavity: CC06-2 ; See "CAVITIES AND BODIES" brochure

PERFORMANCE (Cartridge Only)



BULGARIA, 6100 Kazanlak,
31, Makariopolski str.,
Tel.: (+359 431) 622-22, 655-89
Fax: (+359 431) 622-23,
e-mail: shipka54@mbx.contact.bg