**DESCRIPTION**

A solenoid-operated, 3-way, direct-acting, spool-type, screw-in, hydraulic cartridge valve.

**OPERATION**

When de-energized, the EV10-3A allows flow from 2 to 1, while blocking flow at 3.

When energized, the valve's spool shifts to open from 2 to 3, while blocking at 1.

**RATINGS**

Operating Pressure: 210bar

Flow: 23 l/min max.

Internal Leakage: 82 cc/minute max. at 210bar

Temperature: -20°C to 90°C with standard Buna N seals

Coil Duty Rating: Continuous from 85% to 115% of nominal voltage

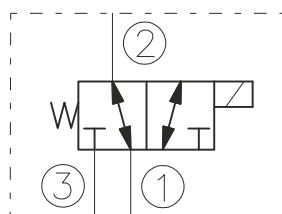
Minimum Pull-in Voltage: 85% of nominal at 210bar

Filtration: Recommended 25µm nominal or better

Fluids: Mineral-based or synthetics with lubricating properties at viscosities of 7,4 to 420 cSt

Installation: No restrictions

Cavity: CC10-3 ; See "CAVITIES AND BODIES" brochure

**SYMBOL****CAVITY**

See "CAVITIES AND BODIES" brochure

**TO ORDER**

EV10-3A

Voltage

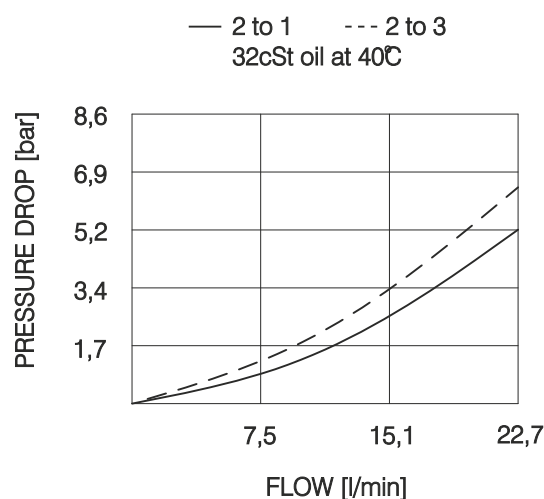
0 - Without coil  
12 - 12V DC  
24 - 24V DC  
11 - 110V RAC  
22 - 220V RAC

Seals

N - Buna N  
V - Viton A

Terminations DIN 43650.

See "Accessories" brochure

**PERFORMANCE (Cartridge Only)**

BULGARIA, 6100 Kazanlak,  
31, Makariopolski str.,  
Tel.: (+359 431) 622-22, 655-89  
Fax: (+359 431) 622-23,  
e-mail: shipka54@mbx.contact.bg