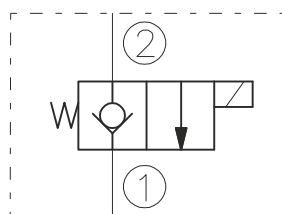


SYMBOL



CAVITY

See "CAVITIES AND BODIES" brochure

TO ORDER

EV10-2B

Voltage

0 - Without coil
12 - 12V DC
24 - 24V DC
11 - 110V RAC
22 - 220V RAC

Seals

N - Buna N
V - Viton A

Terminations DIN 43650.
See "Accessories" brochure

DESCRIPTION

A solenoid-operated, 2-way, poppet-type, normally closed, screw-in, hydraulic cartridge valve, designed to function as a load-holding or blocking valve in applications requiring low internal leakage.

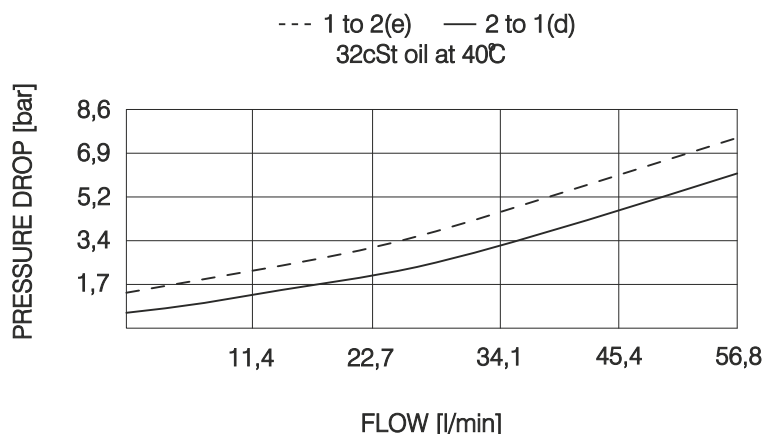
OPERATION

When de-energized, the EV10-2B acts as a check valve, allowing flow to pass from 1 to 2, while blocking flow in the reverse direction. When energized, the poppet lifts to open the 2 to 1. In this mode, flow from 1 to 2 is severely restricted. If this path is required, see model EV10-2E.

RATINGS

Operating Pressure: 210bar
Flow: See Performance Chart
Internal Leakage: 0,25 cc/minute max. at 210bar
Temperature: -20°C to 90°C with standard Buna N seals
Coil Duty Rating: Continuous from 85% to 115% of nominal voltage
Minimum Pull-in Voltage: 85% of nominal at 210bar
Filtration: Recommended 25µm nominal or better
Fluids: Mineral-based or synthetics with lubricating properties at viscosities of 7,4 to 420 cSt
Installation: No restrictions
Cavity: CC10-2 ; See "CAVITIES AND BODIES" brochure

PERFORMANCE (Cartridge Only)



BULGARIA, 6100 Kazanlak,
31, Makariopolski str.,
Tel.: (+359 431) 622-22, 655-89
Fax: (+359 431) 622-23,
e-mail: shipka54@mbx.contact.bg