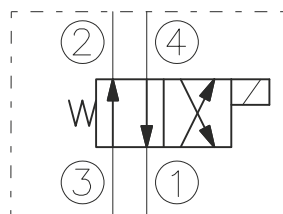


SYMBOL



CAVITY

See "CAVITIES AND BODIES" brochure

TO ORDER

EV08-4A

Voltage

0 - Without coil
12 - 12V DC
24 - 24V DC
11 - 110V RAC
22 - 220V RAC

Seals

N - Buna N
V - Viton A

Terminations DIN 43650.

See "Accessories" brochure

DESCRIPTION

A solenoid-operated, 4-way, 2-position, direct-acting, spool-type, screw-in, hydraulic cartridge valve.

OPERATION

When de-energized, the EV08-4A allows flow from 3 to 2, and from 4 to 1. When energized, the valve's spool shifts to open from 3 to 4, and from 2 to 1. All ports are open at cross-over.

RATINGS

Operating Pressure: 210bar

Flow: 8 l/min max.

Internal Leakage: 82 cc/minute max. at 210bar

Temperature: -20°C to 90°C with standard Buna N seals

Coil Duty Rating: Continuous from 85% to 115% of nominal voltage

Minimum Pull-in Voltage: 85% of nominal at 210bar

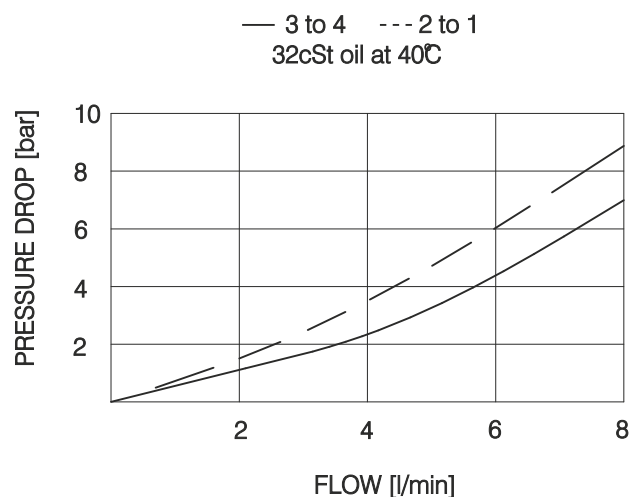
Filtration: Recommended $25\mu\text{m}$ nominal or better

Fluids: Mineral-based or synthetics with lubricating properties at viscosities of 7,4 to 420 cSt

Installation: No restrictions

Cavity: CC08-4 ; See "CAVITIES AND BODIES" brochure

PERFORMANCE (Cartridge Only)



BULGARIA, 6100 Kazanlak,
31, Makariopolski str.,
Tel.: (+359 431) 622-22, 655-89
Fax: (+359 431) 622-23,
e-mail: shipka54@mbox.contact.bg