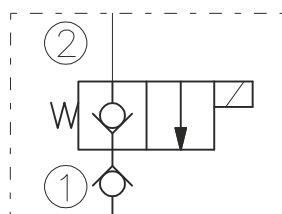


SYMBOL



CAVITY

See "CAVITIES AND BODIES" brochure

TO ORDER

EV08-2D

Voltage

0 - Without coil
12 - 12V DC
24 - 24V DC
11 - 110V RAC
22 - 220V RAC

Seals

N - Buna N
V - Viton A

Terminations DIN 43650.

See "Accessories" brochure

DESCRIPTION

A solenoid-operated, 2-way, piloted, poppet-type, normally closed, screw-in hydraulic cartridge valve, intended to act as a blocking or load-holding device for low flow circuits.

OPERATION

When de-energized, the EV08-2D blocks flow in both directions. When energized, the cartridge poppet lift to open the 2 to 1 flow path. In this mode, flow from 1 to 2 is blocked.

RATINGS

Operating Pressure: 250bar

Flow: See Performance Chart

Internal Leakage: 0,25 cc/minute max. at 250bar

Temperature: -20°C to 90°C with standard Buna N seals

Coil Duty Rating: Continuous from 85% to 115% of nominal voltage

Minimum Pull-in Voltage: 85% of nominal at 250bar

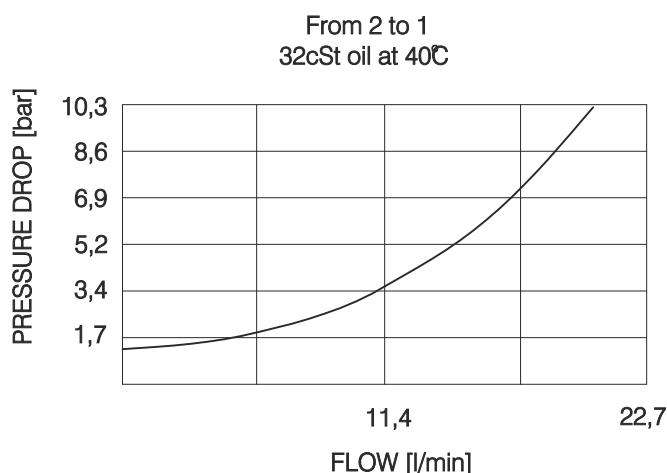
Filtration: Recommended 25µm nominal or better

Fluids: Mineral-based or synthetics with lubricating properties at viscosities of 7,4 to 420 cSt

Installation: No restrictions

Cavity: CC08-2 ; See "CAVITIES AND BODIES" brochure

PERFORMANCE (Cartridge Only)



BULGARIA, 6100 Kazanlak,
31, Makariopolski str.,
Tel.: (+359 431) 622-22, 655-89
Fax: (+359 431) 622-23,
e-mail: shipka54@mbx.contact.bg