

DESCRIPTION

A solenoid-operated, 2-way, direct-acting, seat-type, normally opened, screw-in, hydraulic cartridge valve designed to function as bidirectional blocking valve for low leakage in load-holding applications.

OPERATION

When de-energized, the valve's spool shifts to open the bidirectional flow path. When energized, the EV06-2WF stops flow in both directions.

RATINGS

Operating Pressure: 210bar

Flow: See Performance Chart.

Internal Leakage: 5 drops/minute max. at 210bar

Temperature: -20°C to 90°C with standard Buna N seals

Coil Duty Rating: Continuous from 85% to 115% of nominal voltage

Minimum Pull-in Voltage: 85% of nominal at 210bar

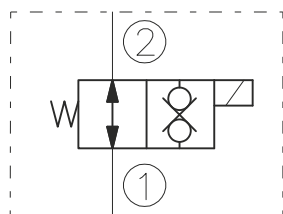
Filtration: Recommended 25µm nominal or better

Fluids: Mineral-based or synthetics with lubricating properties at viscosities of 7,4 to 420 cSt

Installation: No restrictions

Cavity: CC06-2 ; See "CAVITIES AND BODIES" brochure

SYMBOL



CAVITY

See "CAVITIES AND BODIES" brochure

TO ORDER

EV10-2WF

Voltage

0 - Without coil
12 - 12V DC
24 - 24V DC
11 - 110V RAC
22 - 220V RAC

Seals

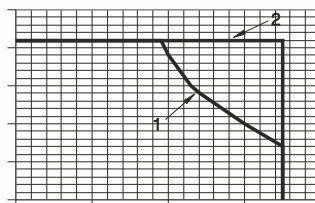
N - Buna N
V - Viton A

Terminations DIN 43650.
See "Accessories" brochure

PERFORMANCE (Cartridge Only)

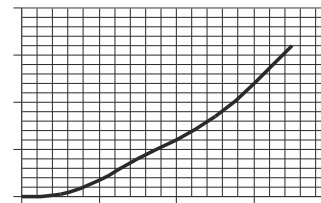
curve 2 - 1 to 2
curve 1 - 2 to 1
32cSt oil at 40°C

PRESSURE [bar]



FLOW [l/min]

PRESSURE [bar]



FLOW [l/min]



BULGARIA, 6100 Kazanlak,
31, Makariopolski str.,
Tel.: (+359 431) 622-22, 655-89
Fax: (+359 431) 622-23,
e-mail: shipka54@mbox.contact.bg