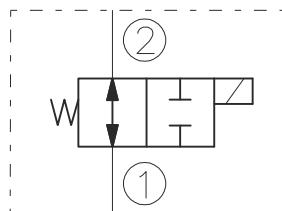


### SYMBOL



### CAVITY

See "CAVITIES AND BODIES" brochure

### TO ORDER

EV06-2K

#### Voltage

0 - Without coil  
12 - 12V DC  
24 - 24V DC  
11 - 110V RAC  
22 - 220V RAC

#### Seals

N - Buna N  
V - Viton A

Terminations DIN 43650.

See "Accessories" brochure

### DESCRIPTION

A solenoid-operated, 2-way, direct-acting, spool-type, normally open, screw-in, hydraulic cartridge valve designed to function as bidirectional blocking valve in low flow circuits.

### OPERATION

When de-energized, the EV06-2K allows flow in both directions. When energized, the valve's spool shifts to close bidirectionally.

### RATINGS

Operating Pressure: 250bar

Flow: 8 l/min max.

Internal Leakage: 82 cc/minute max. at 250bar

Temperature: -20°C to 90°C with standard Buna N seals

Coil Duty Rating: Continuous from 85% to 115% of nominal voltage

Minimum Pull-in Voltage: 85% of nominal at 250bar

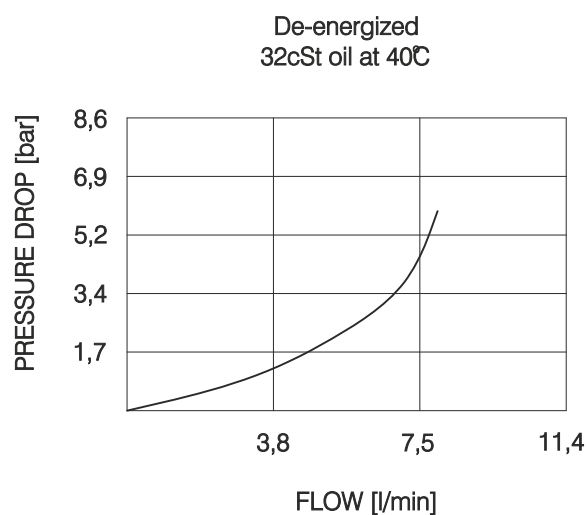
Filtration: Recommended 25  $\mu$ m nominal or better

Fluids: Mineral-based or synthetics with lubricating properties at viscosities of 7,4 to 420 cSt

Installation: No restrictions

Cavity: CC06-2 ; See "CAVITIES AND BODIES" brochure

### PERFORMANCE (Cartridge Only)



BULGARIA, 6100 Kazanlak,  
31, Makariopolski str.,  
Tel.: (+359 431) 622-22, 655-89  
Fax: (+359 431) 622-23,  
e-mail: shipka54@mbox.contact.bg