

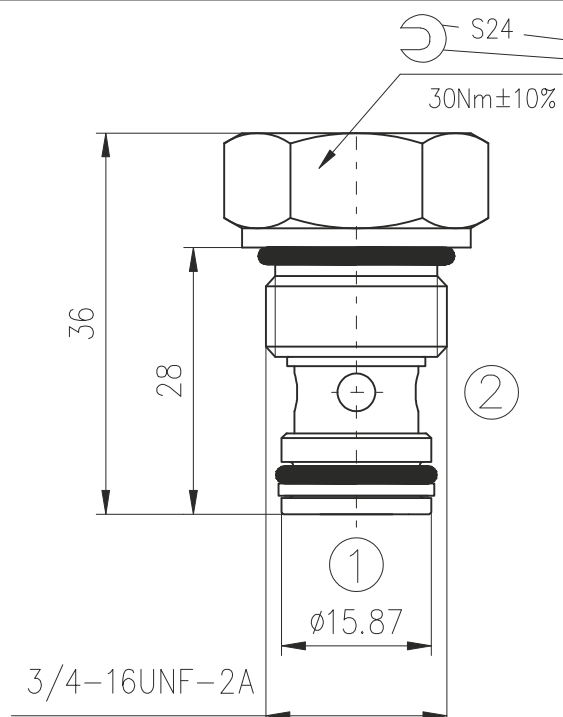
## DESCRIPTION

A screw-in , cartridge-style , hydraulic check valve for use as a blocking or load-holding device.

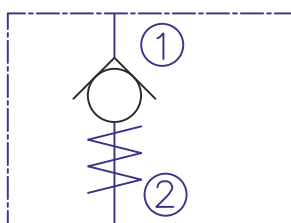
## OPERATION

The CV08-2B allows flow passage from 1 to 2 , while normally blocking oil flow in the opposite direction. The cartridge has a fully guided poppet which is spring-biased closed until sufficient pressure is applied at 1 to open to 2.

## DIMENSIONS



## SYMBOL



## ORDERING CODE

CV08-2B \*\*\*

Check valve

Seals:

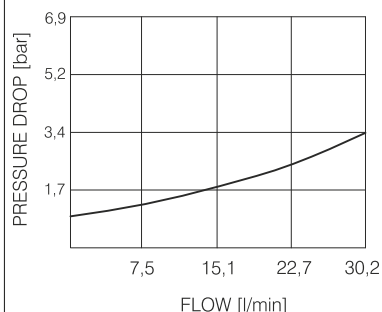
Buna N - N

Viton V - V

## PERFORMANCE

Cartridge only

1 to 2  
32cSt oil at 40°C



## TECHNICAL DATA

Operating pressure	250bar
Rated flow - See Performance Chart	
Internal leakage:	0,25cc/minute max. at 250bar
Standard Bias Spring	1,2bar
Working liquid-hydraulic oils with characteristics: -viscosity -degree of filtration -temperature	10...400 cSt 0,025 mm -20...+80°C
Cavity: See "Cavities and bodies" brochure	CC08-2



BULGARIA, 6100 Kazanlak,  
31, Makariopolski str.,  
Tel.: (+359 431) 622-22, 655-89  
Fax: (+359 431) 622-23,  
e-mail: shipka54@mbox.contact.bg