

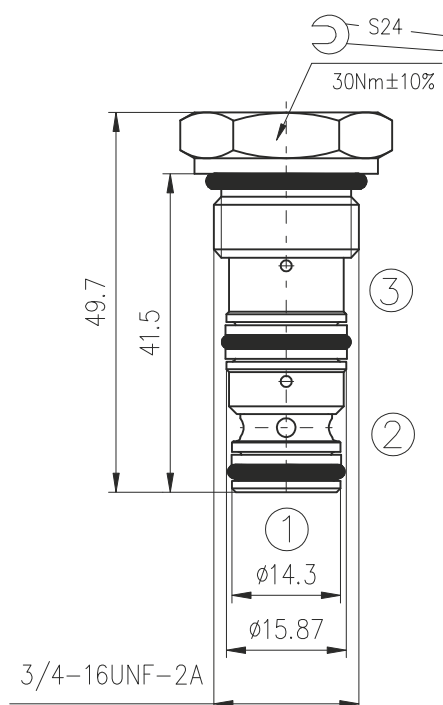
## DESCRIPTION

A screw-in , cartridge-style , pilot operated , hydraulic check valve for use in blocking or load-holding circuits.

## OPERATION

The CPV08-3B allows flow from 2 to 1 , while normally blocking flow from 1 to 2. Flow will be allowed from 1 to 2 when sufficient pressure is applied at 3. The cartridge has a 3:1 pilot ratio , meaning that at least one-third of the load pressure held at 1 is required at 3 to open the valve.

## DIMENSIONS



## ORDERING CODE

CPV08-3B \*\*\*

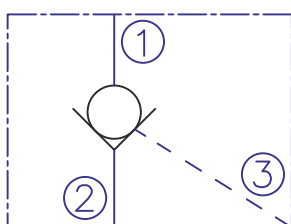
Pilot to open check valve

Seals:

Buna N - N

Viton V - V

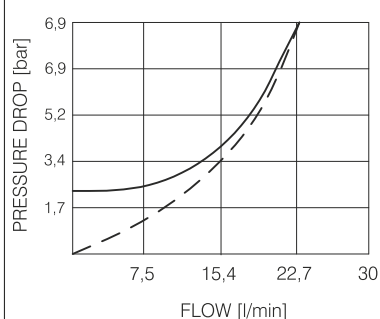
## SYMBOL



## PERFORMANCE

Cartridge only

— free flow    - - - piloted open  
32cSt oil at 40°C



## TECHNICAL DATA

Operating pressure	210bar
Rated flow - See Performance Chart	
Internal leakage: 1 to 2	0,25cc/minute max. at 210bar
Check spring bias	4,8bar
Pilot ratio	3:1
Working liquid-hydraulic oils with characteristics: -viscosity -degree of filtration -temperature	10...400 cSt 0,025 mm -20...+80°C
Cavity: See "Cavities and bodies" brochure	CC08-3



BULGARIA, 6100 Kazanlak,  
31, Makariopolski str.,  
Tel.: (+359 431) 622-22, 655-89  
Fax: (+359 431) 622-23,  
e-mail: shipka54@mbx.contact.bg