

## GENERAL DESCRIPTION

## RH06...6F...

- ✓ 4/3- and 4/2- way directional control valves with pneumatic operation
- ✓ Reliability and long life
- ✓ Mounting surface CETOP3 (NG6)



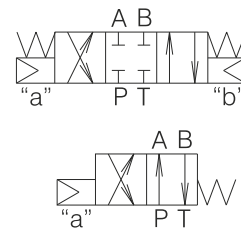
The RH06...6F... valves consist of a spool, housing, springs and pneumatic control unit.

They used to control the start, stop and direction of flow.

This model is designed with two-spring centered spool about 4/3- and 4/2- valves. The housing has 5-chambers.

The valve location during assembly is of minor importance, but the horizontal position is generally recommended. For functional symbols "08", "19", "20" and "82", the horizontal position is obligatory.

## Symbol



## ORDERING CODE

See page 8/17.

## FUNCTIONAL SYMBOLS

See page 3/17.

## TECHNICAL DATA

DATA	UNIT	VALUE/RANGE
Weight	-three positional -two positional	kg 1,950 1,450
Max. Pressure	port P, A & B port T	MPa 32 16
Rated flow	(at $\Delta p=0,1\text{MPa}$ )	l/min 11...20
Pilot pressure	-P <sub>min</sub> -P <sub>max</sub>	MPa 0, 2 1

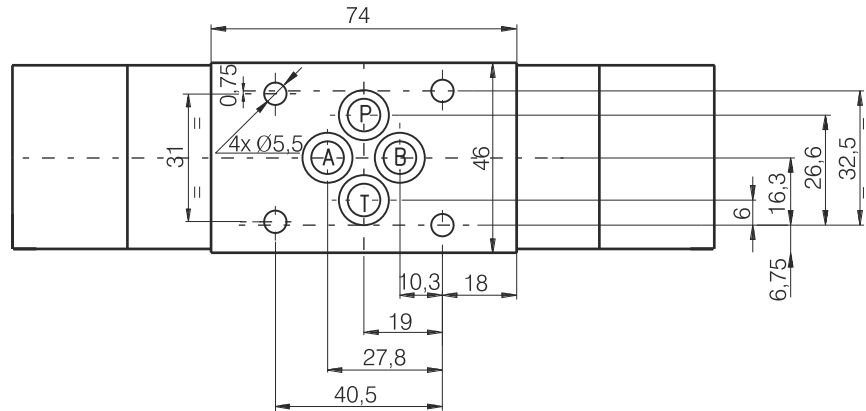
## CHARACTERISTICS

See page 6/17

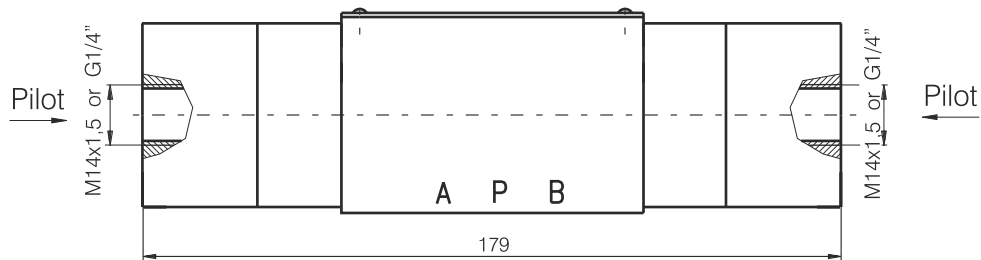


DIMENSIONS

All dimensions are shown in mm.

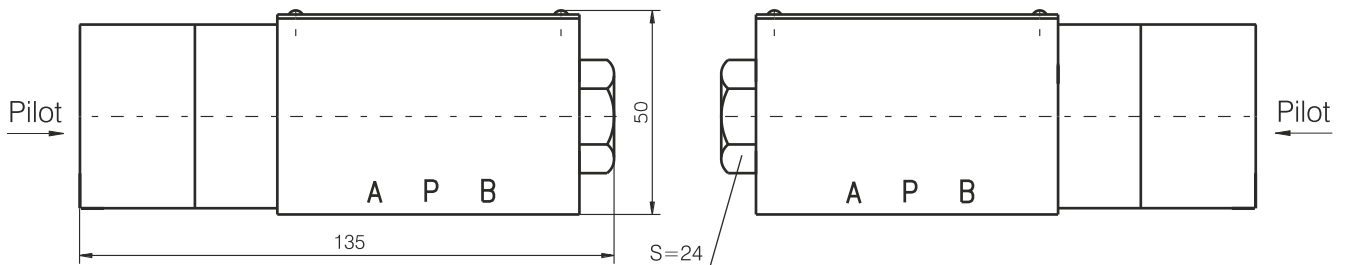


Symbols 00 , 01 , 02 , 04 , 05 , 06 , 08 , 18 , 19 , 20 , 21 , 26 , 40 , 41 , 42 , 52 , 61 , 62 , 82 , 98 , 99



Symbols 11 , 12 , 14 , 17 , 24 , 27 , 33 , 34 , 39 , 45 , 68 , 70 , 83

Symbols 10 , 13 , 16 , 28 , 32 , 36 , 64 , 78



SEALS

