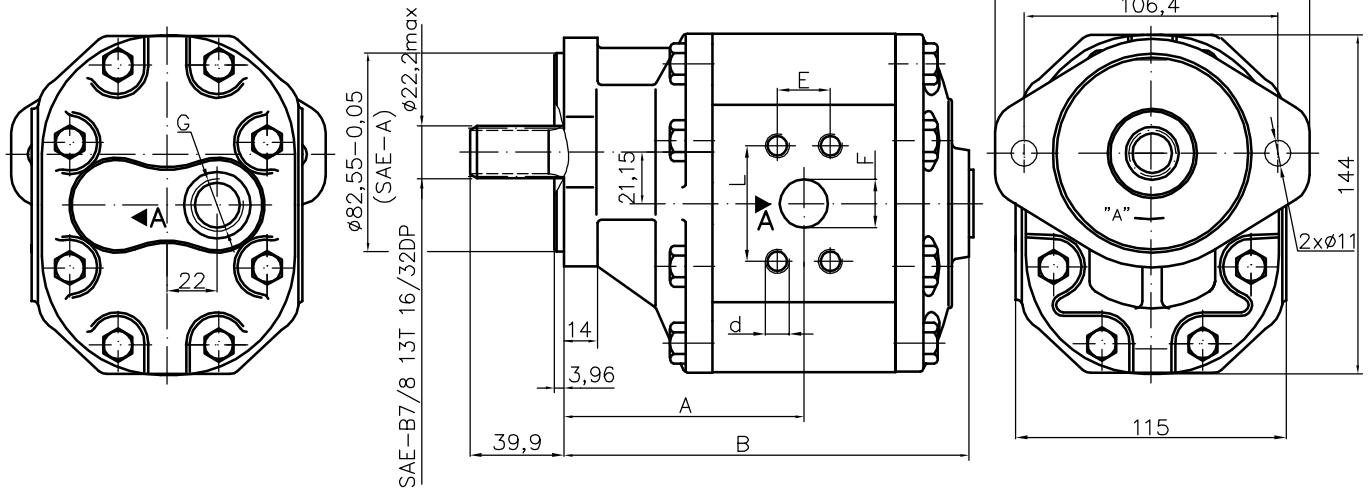


Pump type:
30A(C)...X323H

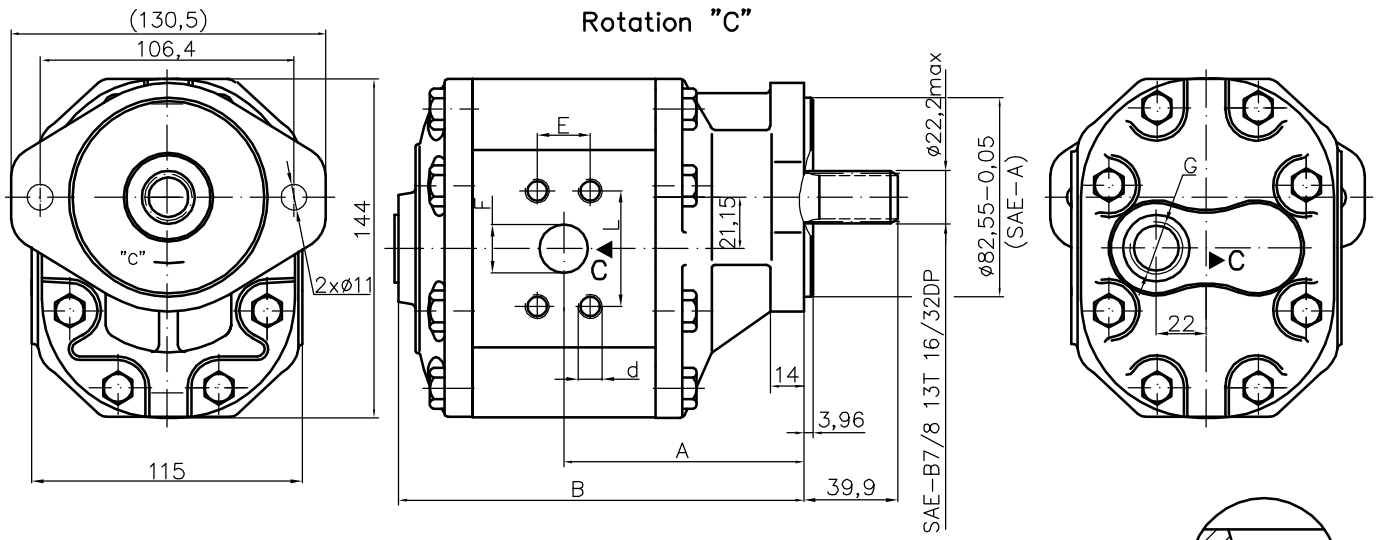


BULGARIA, 6100 Kazanlak,
31, Makariopolski str.,
Tel.: (+359 431) 622-22, 655-89
Fax: (+359 431) 622-23,
e-mail: shipka54@mbox.contact.bg
www.shipka54.com

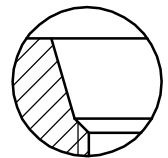
Rotation "A"



Rotation "C"



SAE J475 (ISO R725)
for outlet port



Type	Displacement cm ³ /rev	Flow		Pressure P _{nom} bar	max Speed n rpm	Dimension								
		at 1500 rpm l/min	at max rpm l/min			A mm	B mm	Inlet				Outlet		
								E	d	F	L	G		
30A(C)20X323H	20	28,2	56,4	250	3000	95,1	152,3					1 1/16"-12UNF-2B		
30A(C)22,2X323H	22,5	31,7	63,5	250	3000	96,8	155,4							
30A(C)25X323H	25	35,3	70,5	250	3000	97,4	156,8							
30A(C)28X323H	28	39,5	79,0	250	3000	99,1	160,2							
30A(C)32X323	32	45,1	75,2	250	2500	101,0	163,8	52,4	M8	27	26,2			
30A(C)32X323H	32	45,1	90,2	250	3000	105,5	172,8	52,4	M8	27	26,2			
30A(C)36X323	36	50,8	84,6	250	2500	102,7	166,9							
30A(C)36X323H	36	51,3	95,8	250	2800	107,2	175,9							
30A(C)42X323	42	59,9	91,8	230	2300	105,3	172,5							
30A(C)42X323H	42	59,9	99,8	230	2500	109,8	181,5							
30A(C)46X323H	46	65,6	100,5	230	2300	111,7	186,3							
30A(C)50X323H	50	71,3	99,8	200	2100	113,5	188,9	35,6	M8	32	69,8			
30A(C)55X323H	55	78,4	91,4	200	1750	115,7	193,4	35,6	M8	32	69,8			
30A(C)60X323H	60	85,5	99,8	180	1750	118,0	197,9							